

THE GROUP'S HALLMARK



The company EIFFAGE CONSTRUCTION METALLIQUE, formerly Eiffel Construction Métallique, has by executive decree of the Court of Appeal of Bordeaux on May 16th, 2011, been the object of an interdiction against using the name Eiffel for any purposes.

The present document was made before this decision was announced, and thus features the name Eiffel which is at this time and henceforth no longer used as a brand name, title or trade name by the company EIFFAGE CONSTRUCTION METALLIQUE.

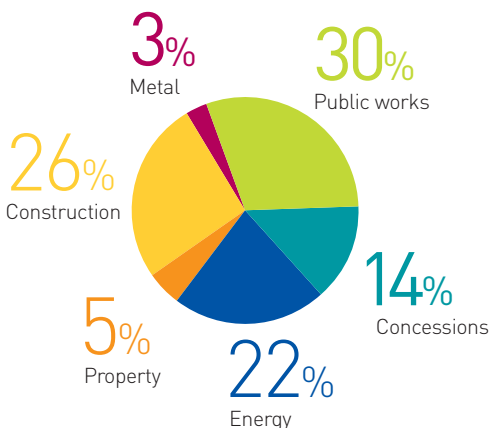
It should therefore be noted that the name EIFFEL no longer belongs to and is no longer used in a commercial context by the company EIFFAGE CONSTRUCTION METALLIQUE.

EXPERTISE IN SYNERGY

ENHANCING PEOPLE'S QUALITY OF LIFE HAS ALWAYS BEEN A TOP PRIORITY FOR ALL EIFFAGE'S DEVELOPMENT AND CONSTRUCTION PROJECTS. WHATEVER THEIR NATURE OR PURPOSE, THE GROUP SYSTEMATICALLY ASSEMBLES THE NECESSARY TALENT, TECHNICAL AND HUMAN EXPERTISE TO ENSURE THAT PROJECTS ARE BUILT TO THE HIGHEST STANDARDS AND THAT THE FINISHED PRODUCT STANDS THE TEST OF TIME.



REVENUE BY ACTIVITY



70,000
EMPLOYEES

REVENUE OF
€13 billion



EIFFAGE

Concessions and PPPs

Eiffage Concessions is a major builder and concession operator of motorways and other large infrastructure projects, public facilities, buildings and urban development projects. The company finances, designs, builds, maintains and services these structures. **APRR** and **AREA** operate motorways and toll structures under government-awarded concessions.

Construction

Eiffage Construction carries out the Group's building, property development and facility management activities for projects involving housing, offices, public facilities, shopping centres, industrial sites and historic monuments.

Public works

Eiffage Travaux Publics is responsible for the Group's earthmoving, road construction and civil engineering businesses, with activities including new-build and maintenance work as well as the production of coated aggregates and binders.

Energy

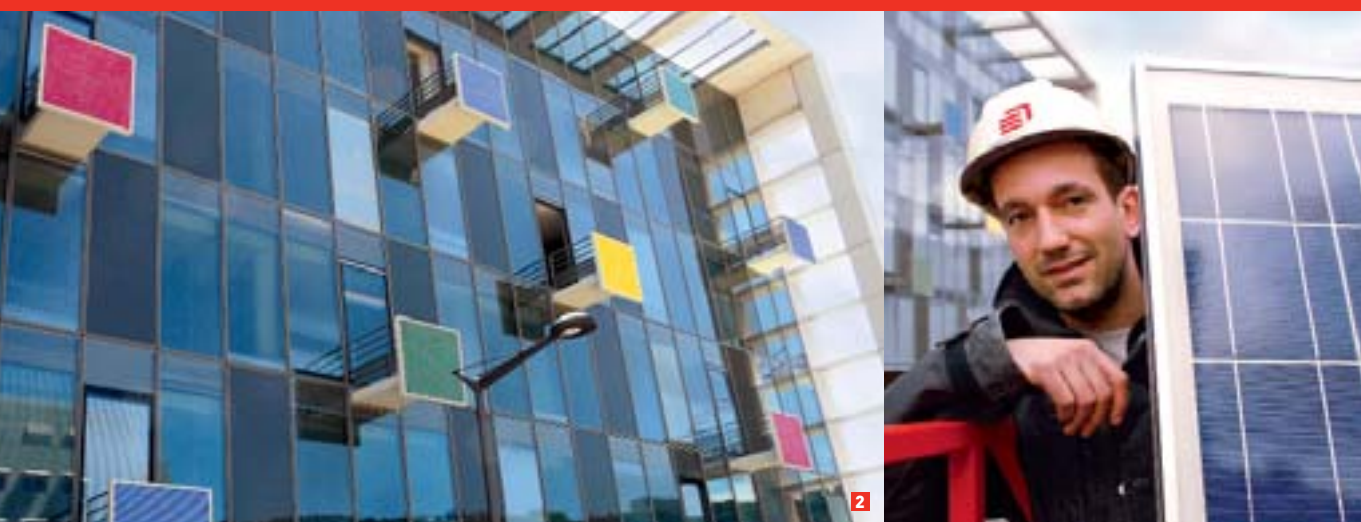
Clemessy, Crystal and **Forclum** specialise in electrical engineering, HVAC and process automation, providing comprehensive turnkey solutions that include the design, construction, operation and maintenance of multi-technical installations and special-purpose facilities in all sectors of activity.

Metal

Eiffel applies its metallic construction expertise across the full range of specialist fields: engineering structures, elevations, buildings, mechanical engineering, offshore projects, boilermaking, industrial maintenance, valves and pipe systems.

A RESPONSIBLE PARTNER

AS A MAJOR PLAYER IN THE FRENCH AND EUROPEAN CONSTRUCTION INDUSTRY, EIFFAGE HAS DECIDED TO OVERHAUL ITS CORE BUSINESSES IN ANTICIPATION OF A CHANGING MARKET.



98%

OF EMPLOYEES
IN FRANCE ARE GROUP
SHAREHOLDERS

OVER

100 NATIONALITIES
REPRESENTED



1 Phosphore prospective urban development project (the quayside multimodal station and service tower).

2 Eiffage's regional headquarters at the Hélianthe low-energy building in Lyon.

3 Biotope preservation work on the A406 motorway (corncrake on the Val-de-Saône flood plain).

4 The carex, a rare plant in Aquitaine, is protected along the route of the A65 motorway.

Eiffage's sustainable development strategy reflects the convergence of the innovative contributions and initiatives of the Group's various operational entities with the goals set out in the corresponding action plan.

Action to preserve the ecosystem

This constructive dialogue, to which the Group's external partners also contribute, helps to shape our actions on a daily basis, as part of a fascinating process that will strengthen Eiffage's reputation as a responsible company with an ecosystemic approach.

FEDERATING EXPERTISE

CONCESSIONS AND PPPS IN THE AREAS OF INFRASTRUCTURE, PUBLIC FACILITIES AND BUILDING CONSTRUCTION NOW CONSTITUTE A STRATEGIC VECTOR FOR EIFFAGE'S DEVELOPMENT.



EIFFAGE PARTICIPATING INTERESTS

- 51%** COMPAGNIE EIFFAGE DU VIADUC DE MILLAU
- 36%** NORSCUT
- 33%** TUNNEL PRADO-CARENAGE
- 50%** TP FERRO
- 65%** A'LIÉNOR
- 41,5%** TUNNEL PRADO SUD
- 100%** CONNECTIC 78 *(Broadband connectivity in Yvelines)*
- 81%** CONNECTIC 39 *(Broadband connectivity in Jura)*
- 81%** ALLIANCE CONNECTIC *(Broadband connectivity in Belfort-Delle-Héricourt-Montbéliard)*
- 81%** ARMOR CONNECTIC *(Broadband connectivity in Côtes d'Armor)*
- 81%** CAPAIX CONNECTIC *(Broadband connectivity in Pays d'Aix-en-Provence)*
- 50%** AD'TIM *(Broadband connectivity in Drôme-Ardèche)*
- 15%** SEQUALUM *(Broadband connectivity in Hauts-de-Seine)*
- 19%** MEMONET *(Broadband connectivity in Meurthe-et-Moselle)*
- 100%** OPTIMEP 4 *(Prisons)*
- 100%** HEVEIL *(Southern Paris Region hospital centre)*
- 100%** H'ENNEZ *(Rennes hospital centre)*
- 100%** HANVOL *(Annemasse-Bonneville hospital centre)*
- 100%** SOPRANO *(Plessis-Robinson market)*
- 100%** CENTOR 36 *(Police station in Châteauroux)*
- 100%** ELISA *(Lille Métropole stadium)*
- 100%** EIFFIGEN *(National police headquarters in Issy-les-Moulineaux)*
- 100%** EIFFAGE LIPPE *(Germany)*
- 100%** SENAC *(Dakar-Diarnniadio motorway)*



1



3



4

1 When it opens in 2012, Lille Métropole stadium will host a wide variety of sports and entertainment events.

2 The Perpignan-Figueras high-speed rail link was handed over on schedule to the concession operator TP Ferro.

3 The A65 (A'liénor) motorway will link Pau and Langon, interconnecting with the A64 motorway to the south and the A62 to the north via two interchanges.

4 Extensive resources have been deployed for the ongoing work at the Southern Paris Region hospital centre.

A wide range of projects

In the area of transport infrastructure concessions, Eiffage followed up the Perpignan-Figueras high-speed rail link with an investment in the A65 motorway between Pau and Langon, strengthening the Group's position in this booming market.

The breadth of Eiffage's expertise is reflected in the Group's portfolio, which includes the highly innovative, emblematic Lille Métropole stadium, the construction and operation of four prisons, four hospitals, broadband communication systems and the national police headquarters.

Dedicated project teams coordinate the expertise of the various operational divisions and the Group's network of local offices, which are major assets in winning and successfully completing this type of project.

International activities

Examples illustrating Eiffage's leadership in the road infrastructure management sector include the Norscut and Dakar-Diamniadio motorway concessions (in Portugal and Senegal, respectively), and the road maintenance PPP agreement for the Lippe district in Germany.

PROVIDING COMFORT AND SAFETY

THE APRR GROUP HOLDS THE OPERATING CONCESSION (UNTIL 2032) FOR A WELL-MESHED NETWORK OF MOTORWAYS EXTENDING ON OVER 2,234 KM. THIS BALANCED NETWORK, WHICH IS NOW ALMOST COMPLETE (WITH ONLY 44 KM STILL TO BE BUILT), IS A CORNERSTONE OF THE FRENCH AND EUROPEAN TRANSPORT SYSTEM. APRR IS FRANCE'S SECOND-LARGEST MOTORWAY OPERATOR, AND THE FOURTH-LARGEST IN EUROPE.



4,000
EMPLOYEES

1 Remote toll collection now accounts for more than 40% of transactions.

2 Secure lorry parking areas protected by 24/7 monitoring systems keep loads safe and provide peace of mind for lorry drivers.

3 4 A closely-monitored network.

REVENUE OF

€1.8 billion



20 billion
kilometres travelled

250 million
transactions annually

Safety first

Notwithstanding the fact that motorways are four times safer than other roads, APRR is determined to do everything in its range to optimise network safety. Reducing the risk of accidents requires a multi-pronged approach that involves constantly improving the network, enhancing the supervision and alert systems and encouraging motorists to adopt safer behaviour, with particular emphasis on aspects such as drowsiness, tyre pressures, speed and remaining at a safe distance from the vehicle in front.

Simpler toll procedures

The APRR Group is rolling out “virtualised” toll barriers in response to strong demand, enabling customers to benefit from the latest technological advances in this area. After enabling toll payments to be made by bank card, which motorists found very convenient, APRR has introduced

deferred-payment remote charging systems (and more recently, drive-through toll barriers). These innovations make the procedure even simpler and allow traffic to flow more quickly through toll stations. These means of payment can also be used to encourage customers loyalty. For example, the Group has developed packages to suit various categories of user, such as students, business users and commuters.

More services at rest areas

Using the motorway can be an enjoyable experience - and not just because it is a convenient form of travel. APRR has adopted an imaginative, creative approach in order to make some of its motorway rest areas and service stations places where users can relax for a while and learn more about the regions through which they are travelling.

BUILDING THE FUTURE

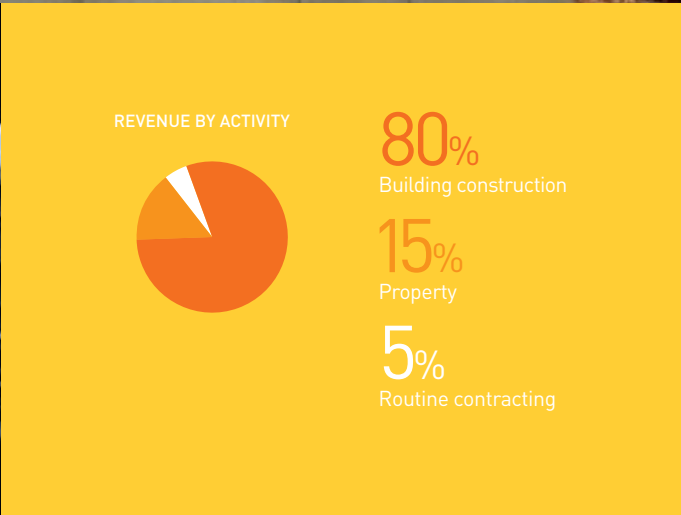
EIFFAGE CONSTRUCTION HAS EXPERTISE IN ALL ACTIVITIES RELATING TO CONSTRUCTION, LAND AND PROPERTY DEVELOPMENT, MAINTENANCE AND FACILITY MANAGEMENT.

THIS PROVIDES A BROAD PLATFORM FROM WHICH TO OFFER CUSTOMERS FULL-SPECTRUM EXPERTISE AND A WIDE RANGE OF SERVICES.



16,000
EMPLOYEES

REVENUE OF
€4 billion



1 Vélizy Campus
 (Global headquarters
 of Dassault Systèmes).
 Architect: Arte
 Charpentier.

**2 Elephant House
 in Poznan** (Poland).
 Architect: MTT
 Architecture Group.

**3 The Ilot Bonnac
 neighbourhood
 in Bordeaux.**
 Architect: J.-P. Buffi.

Extensive resources for custom projects

Eiffage Construction does business all over France through its 150 operational units, which are organised into 11 regional departments. Responsiveness and in-depth knowledge of local markets are among the benefits of this powerful network of locations. The company is also active in the Benelux countries, Poland and the Czech Republic.

Because each regional department can count on the Group's expertise as well as its own resources, it is able to handle projects of all types and sizes in areas

including housing, offices, healthcare or educational institutions, retail outlets, hotels, industrial buildings and tourist, arts and leisure facilities. This expertise is a major asset when dealing with complex operations such as public-private partnerships (PPPs) and urban development projects.

Eiffage Construction is fully committed to incorporating the objectives of the Grenelle Environment Round Table process into its strategy, and has set up a dedicated innovation, research and sustainable development department.

LEADING THE WAY

EIFFAGE TRAVAUX PUBLICS HAS EXPERTISE ACROSS THE FULL SPECTRUM OF ACTIVITIES RELATING TO ROAD AND RAILWAY CONSTRUCTION, CIVIL ENGINEERING, DRAINAGE AND EARTHWORKS. EACH YEAR, THE DIVISION HANDLES 30,000 PROJECTS, PROVIDING CUSTOMERS WITH TURNKEY SOLUTIONS FOR THEIR INFRASTRUCTURE REQUIREMENTS.



20,000
EMPLOYEES

REVENUE OF
€4 billion



1



2

REVENUE BY ACTIVITY



8%
Environment and drainage

10%
Earthworks

15%
Civil engineering, engineering structures and underground infrastructure

67%
Roads and industry

1 Tamarins road on Reunion Island. Eiffage Travaux Publics, operating in a consortium, handled the earthworks, engineering structures and road surfacing work for half of the 34 km long road that links Saint-Paul to Étang-Salé.

2 Eiffage Travaux Publics carried out 20% of the civil engineering and earthworks for the **LGV-Est high speed rail line.**

In France, Eiffage Travaux Publics has adopted a decentralised organisation based on a network of multidisciplinary regional departments supported by specialist units, providing the flexibility to adapt to local needs. In addition, the division has operations elsewhere in Europe, via subsidiaries in Germany, Belgium, Spain and Portugal, and is also active in Senegal.

It is a major supplier of binders and bare and coated aggregates, with its own quarries, aggregate coating facilities and binder plants.

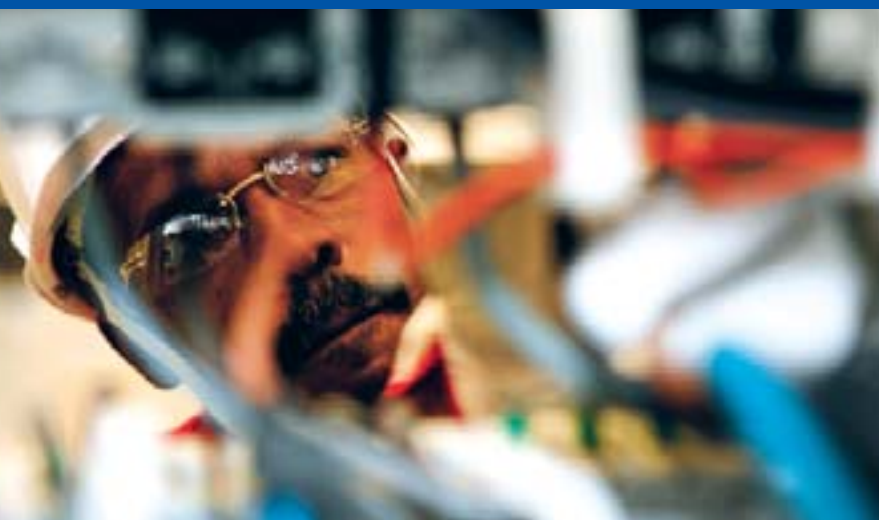
A forerunner on quality and environmental issues

Most of Eiffage Travaux Publics companies are ISO 9001-certified, and the division has now launched an environmental strategy to obtain ISO 14001 certification for those entities that have not already acquired it.

Eiffage Travaux Publics has all the necessary expertise and resources to successfully design, engineer, build and maintain projects of all kinds.

MANAGING ENERGIES

EIFFAGE'S ENERGY DIVISION – COMPRISING CLEMESSY, CRYSTAL AND FORCLUM – IS NOW THE THIRD-LARGEST OPERATOR IN THE ENERGY, NETWORKS AND INFORMATION SYSTEMS MARKET.



24,000
EMPLOYEES

1 Illuminations on the Champs-Élysées.

2 Forclum helps its customers tackle the challenges of global warming and reduce their energy footprints.

3 A gearbox test stand designed and built by Clemessy.

REVENUE OF
€3.7 billion

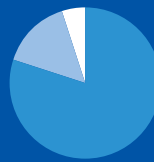


1



3

REVENUE BY ACTIVITY



80%
Electrical
engineering

15%
Climate engineering

5%
Process automation

Eiffage Énergie customers can be confident that they will enjoy the standards of expertise and quality of service that can be expected of a major group specialised in the development of next-generation solutions for electrical engineering, HVAC and process automation applications.

In the area of environmental protection, Eiffage Énergie is committed to reducing its customers' energy footprints by installing equipment to help them face the challenges of global warming and scarcer fossil energy.

The Energy division has strong bases in France, Germany, the Benelux countries, Italy, Spain and Portugal, and also exports its expertise world-wide.

Careful consideration for all of its customers' production-related constraints

Drawing on its specialist design offices and tightly integrated expertise, Eiffage Énergie is able to propose all-round turnkey solutions for the very largest of projects. The division designs, builds, operates and maintains multi-technical facilities and innovative special-purpose equipment – however complex – in all sectors of activity.

Eiffage Énergie's regular customers include government agencies, local and regional authorities, manufacturers and service-sector companies. Project teams are assembled according to the scale and type of project (e.g. infrastructure, custom-designed facilities or installations at sensitive sites), and any constraints relating to the customer's production capabilities are systematically taken into account.

CULTIVATING INNOVATION

EIFFEL, THE LONGSTANDING LEADER IN THE METALLIC CONSTRUCTION SECTOR, HAS A STRONG FOCUS ON INNOVATION, AND IS CONSTANTLY PUSHING BACK THE LIMITS OF TECHNOLOGY. THE GROUP IS AN INDUSTRIAL DESIGNER RENOWNED FOR ITS ABILITY TO BUILD EXCEPTIONAL STRUCTURES FOR THE MOST DEMANDING CLIENTS IN THE INDUSTRIAL AND BUILDING SECTORS.



4,000
EMPLOYEES

REVENUE OF
€700 million



1



3

1 The footbridge at Limerick University in Ireland.

2 The Fondation LVMH building in the acclimatisation garden in Paris, which is devoted to the creation and display of contemporary art. Architect: Frank Gehry.

3 Goyer manufactured and installed 750 elevation sections and “breathing” curved glass windows for the Khapa building in Boulogne-Billancourt.

Eiffel designs and builds projects in France and further afield, with a range of businesses encompassing engineering structures, and structural walls, heavy structures for buildings and factories, mechanical engineering, boilermaking, industrial maintenance and related services.

A reputation for professionalism

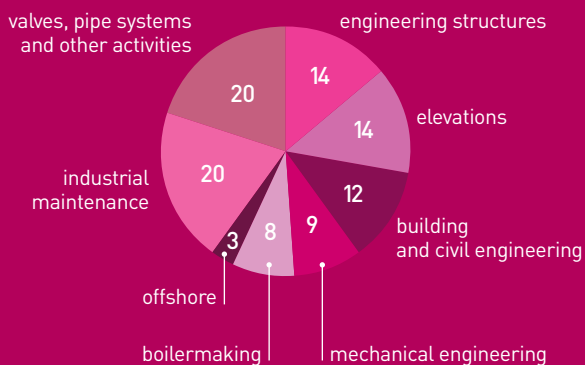
After extending its range of activities with the 2005 takeover of Goyer, the market-leading elevation specialist, Eiffel has significantly increased its presence in the industrial arena by acquiring a series of well-established maintenance contractors, including Camom.

Thanks to the wide variety of services that Eiffel is now able to provide,

the company is in a position to diversify its activities, participates in strategic projects and moves into new sectors.

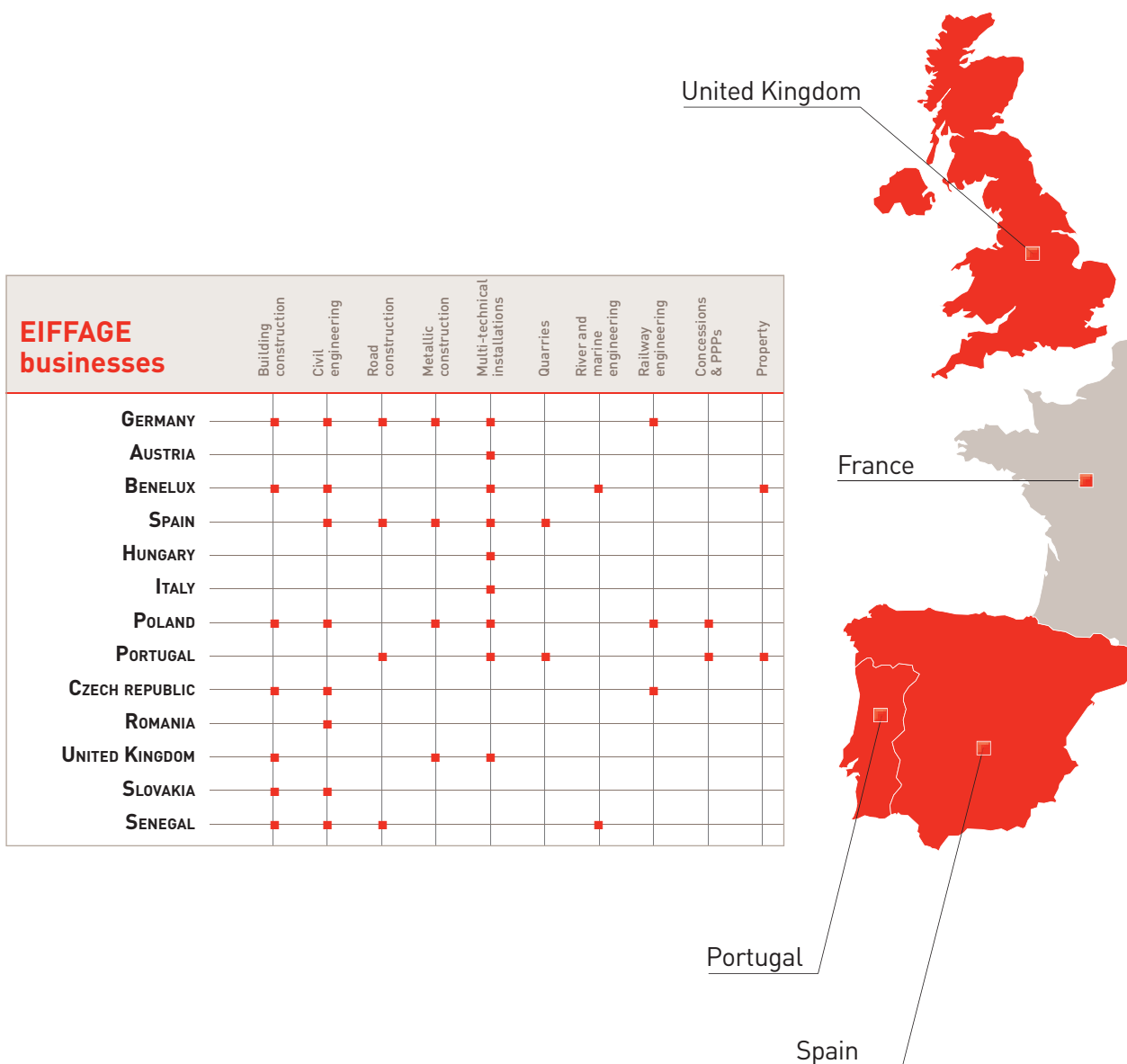
A host of milestone projects – from the Eiffel tower that is celebrating its 120th anniversary in 2009, to the Millau viaduct and, more recently, the Grande Ravine viaduct on Reunion Island – have earned the company a reputation as a specialist in complex and unique structures. Eiffel has also underlined its ability to operate in high-security environments such as nuclear power plants and oil refineries.

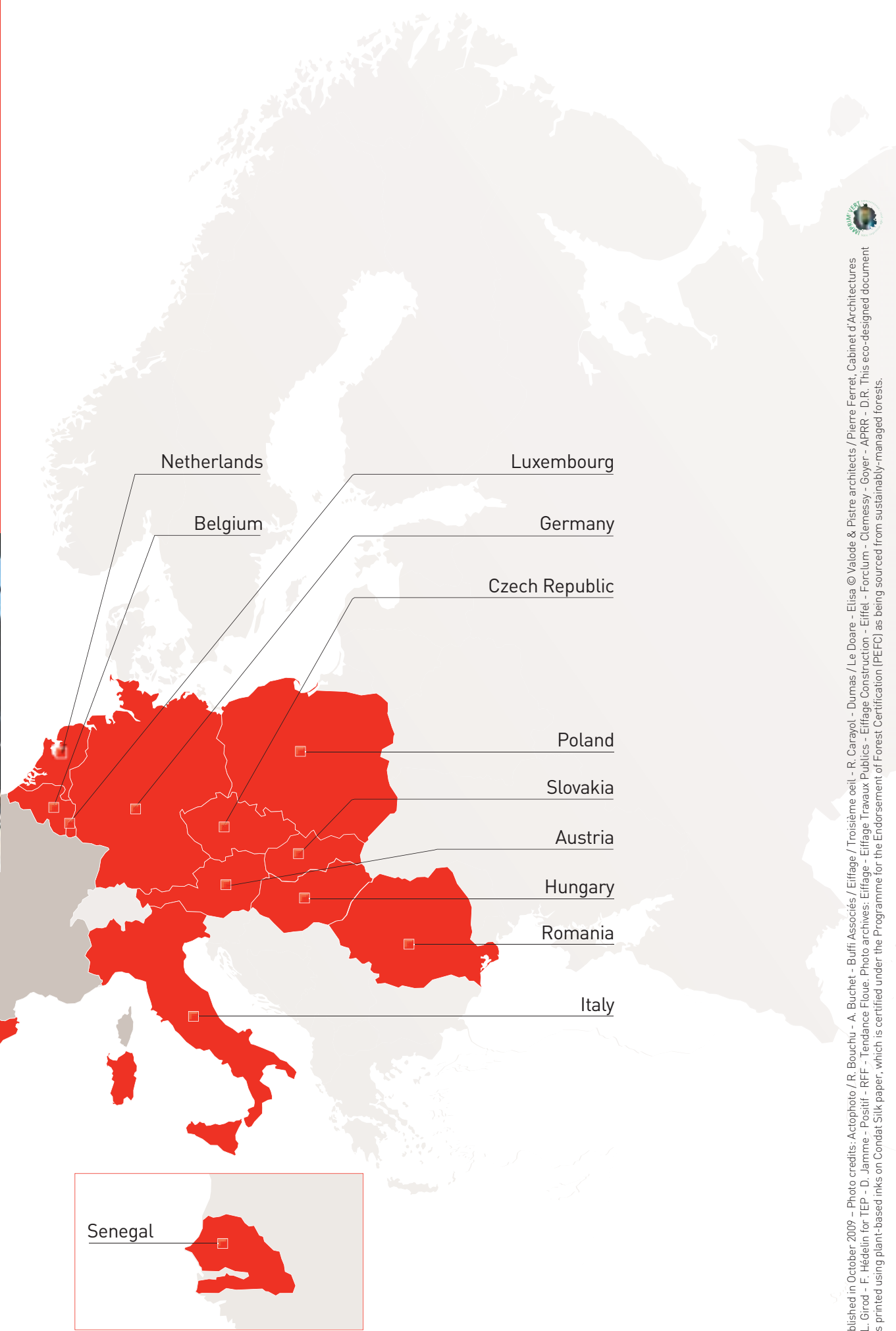
REVENUE BY ACTIVITY
(% of total revenues)



INTERNATIONAL EXPERTISE

THE EIFFAGE GROUP HAS A SIGNIFICANT PRESENCE OUTSIDE FRANCE IN EACH OF ITS BUSINESSES (CONSTRUCTION, PUBLIC WORKS, ENERGY, METALLIC CONSTRUCTION AND CONCESSIONS).





Netherlands

Luxembourg

Belgium

Germany

Czech Republic

Poland

Slovakia

Austria

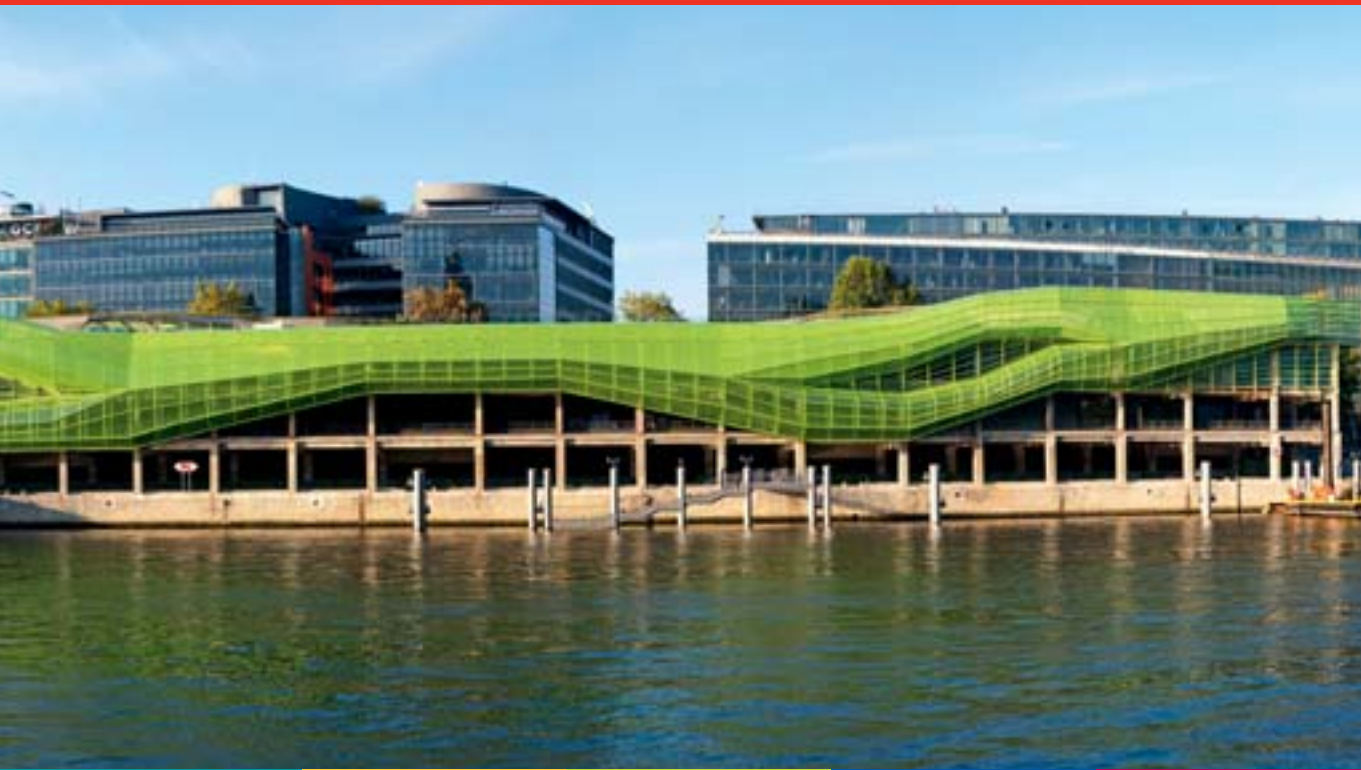
Hungary

Romania

Italy

Senegal





163 quai du Docteur-Dervaux – 92600 Asnières-sur-Seine – France
Phone: +33 (0)1 41 32 80 00 – Fax: +33 (0)1 41 32 80 10

Share capital €360,000,000 (90,000,000 shares at €4 each)
Registered in the Nanterre Trade and Companies Register under no. B 709 802 094
SIRET code: 709 802 094 01130 – APE code: 7010Z

www.eiffage.com



EIFFAGE CONCESSIONS

163 quai du Docteur-Dervaux
92601 Asnières-sur-Seine
France
Tel.: +33 (0)1 41 32 80 00
www.eiffage.com



APRR

36 rue du Docteur-Schmitt
21850 Saint-Apollinaire
France
Tel.: +33 (0)3 80 77 67 00
www.aprr.com



EIFFAGE CONSTRUCTION

3 avenue Morane-Saulnier
78140 Vélizy-Villacoublay
France
Tel.: +33 (0)1 34 65 89 89
www.eiffageconstruction.com



EIFFAGE TRAVAUX PUBLICS

2 rue Hélène-Boucher - BP 92
93337 Neuilly-sur-Marne Cedex
France
Tel.: + 33 (0)1 49 44 92 00
www.eiffagetravauxpublics.com



FORCLUM

117 rue du Landy - BP 800008
93213 La Plaine
Saint-Denis Cedex
France
Tel.: +33 (0)1 55 87 51 00
www.forclum.com



CLEMESSY

18 rue de Thann - BP 52499
68057 Mulhouse Cedex 2
France
Tel.: +33 (0)3 89 32 32 32
www.clemessy.fr



EIFFEL

48-50 rue de Seine
92707 Colombes Cedex
France
Tel.: +33 (0)1 47 60 47 00
www.eiffel.fr



Focus Park in Bydgoszcz, Poland.



Europe's largest solar electricity farm, in Amaraleja (in the municipality of Moura), Portugal.



The court building in Liège, Belgium.



The new station in Ostrava-Stodolni, Czech Republic.



In Senegal, the Corniche road in Dakar was officially opened during the summit of the Organisation of the Islamic Conference (OIC).